



zehnder

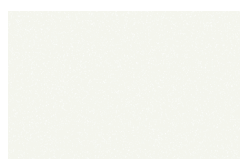
always the
best climate

World of Colours

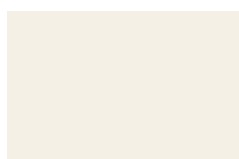


Warm colours

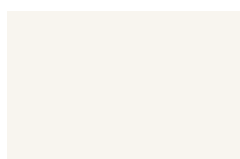
CORE



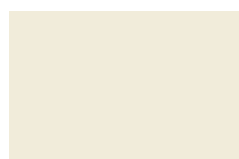
White Quartz
0521



Pure White
RAL 9010 / 9010



Edelweiss
0067



Cream
RAL 9001 / 9001



Telegrey 4
RAL 7047 / 7247



Beige Quartz
0523



Golden Sand
0258



Yellow Grey
RAL 7034 / 7234



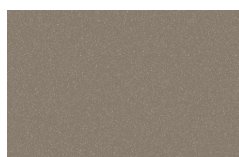
Pearl Beige
RAL 1035 / 1235



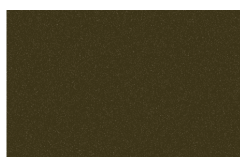
Beach Gold
0272



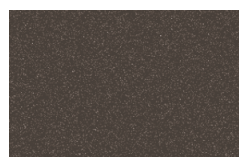
Concrete Grey
0265



Beige Grey
0267



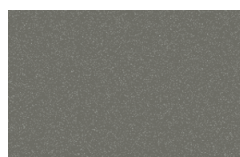
Bronze
0276



Brown Quartz
0529



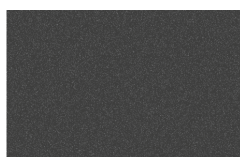
Dark Brown
0270



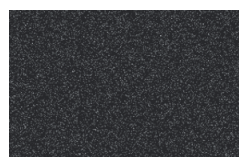
Grey Aluminium
9007



Anthracite
0346



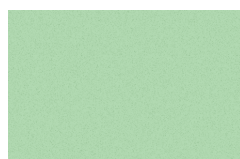
Umbra Grey
RAL 7022 / 7222



Volcanic
0336



TREND



Pastel Green
RAL 6019 / 6219



Reseda Green
RAL 6011 / 6211



Cement Grey
RAL 7033 / 7233



Olive Green
RAL 6003 / 6203



Terracotta Faded
0299



Terracotta
0292



Ruby Red
RAL 3003 / 3003



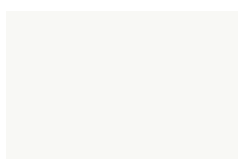
◆ Diese Farben werden glänzend, alle anderen matt ausgeführt. – These colours are finished with a gloss finish; all other colours are matt-finished. – Les teintes marquées d'un losange sont de finition brillante, les autres de finition mate. – I colori contrassegnati con diamante hanno finitura brillante, gli altri opaca. – De kleuren aangeduid met een diamant zijn glanzend, de andere zijn mat. – Estos colores presentan un acabado brillante; el resto es en acabado mate. – Tak oznaczone kolory wykonane są w połysku, pozostałe w matie. – Данные цвета являются глянцевыми, остальные цвета – матовые.

* Einige Oberflächen sind nur für ausgewählte Produkte erhältlich. – Some finishes may be available for selected products only. – Certaines finitions ne sont disponibles que pour une sélection de produits. – Alcune finiture sono disponibili solo per determinati prodotti. – Sommige coatings zijn alleen toepasbaar op bepaalde producten. – Algunas superficies están solamente disponibles para determinados productos. – Niektóre powierzchnie dostępne są jedynie dla wybranych produktów. – Некоторые варианты покрытий доступны только для определенно выбранных моделей.

RAL-codes are descriptions of manufacturer.

Cool colours

CORE



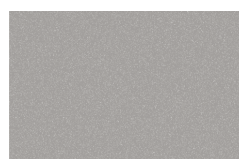
White Matt
0556



Light Beige
0253



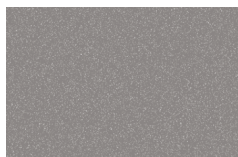
Light Grey
0262



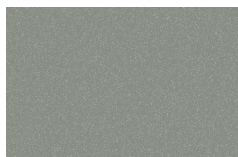
White Aluminium 
9006




Light Jeans
0264



Titane 
0335



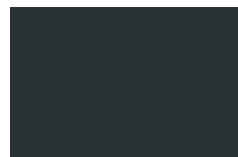
Inox Look 
0332




Telegrey 2
RAL 7046 / 7246



Blue Grey
RAL 7031 / 7231



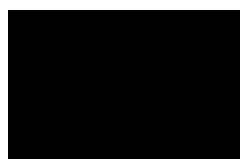
Anthracite Grey 
RAL 7016 / 7016



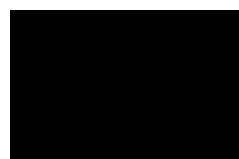
Black Quartz
0550




Black Matt
0557



Traffic Black
RAL 9017 / 9217



Jet Black 
RAL 9005 / 9005

TREND



Pastel Blue
RAL 5024 / 5224



Pigeon Blue
RAL 5014 / 5214



Gentian Blue
RAL 5010 / 5210




Sapphire Blue
RAL 5003 / 5203



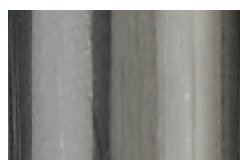
Blue Night
0289


STANDARD



Traffic White 
RAL 9016 / 9016

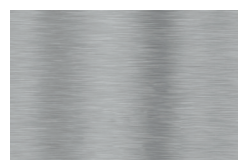
FINISHES *



Technoline (Clear) 
0325

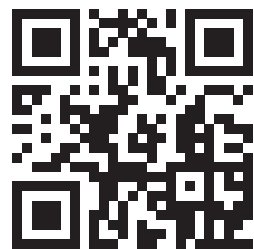


Chrome (Surface)
0008



Stainless steel brushed
9517

Trotz äußerster Sorgfalt bei der Herstellung dieser Farbkarte als auch beim Lackiervorgang unserer Heizkörper sind leichte Farbabweichungen, je nach Fertigungsreihe und gegenüber anderen Farbträgern (Keramik, Papier, Metall...) möglich. – Despite every care having been taken during the manufacturing process of this colour chart and of course when coating our radiators, small variations may occur between different production runs and different reference materials (ceramic, paper, metal, ...). – Malgré tout le soin apporté à la fabrication de ce nuancier et à la mise en peinture de nos radiateurs, de faibles nuances de teinte et de brillance peuvent se produire par rapport aux couleurs de référence, aux différentes matières en cause (céramique, papier, métal ...) et suivant les lots de radiateurs. – Nonostante le cure apportate alla realizzazione di questa cartella colori ed i continui controlli di qualità effettuati sulla verniciatura dei nostri caloriferi, il prodotto finito può presentare lievi differenze rispetto alla cartella colori o ad altri materiali di riferimento (ceramica, carta, metallo ...). – Ondanks de grote zorg die is besteed aan de productie van deze kleurenkaart en de continue kwaliteitscontrole bij het coaten van de radiatoren, kunnen kleine kleurnuances ontstaan in de radiatoren onderling en in vergelijking tot ander referentiemateriaal (keramiek, papier, metaal ...). – A pesar del cuidado con el que se ha realizado esta carta de colores y que se tiene en la fabricación de nuestros radiadores, pueden existir pequeñas variaciones de color dependiendo de los diferentes materiales (cerámica, papel, metal, etc.). – Pomimo dołożenia wszelkiej staranności w trakcie opracowywania niniejszego wzornika, jak i gotowych produktów, należy się liczyć z niewielkimi odchyłkami kolorów, wynikającymi z różnic serii produkcyjnych i podłoży użytych do odzwierciedlenia kolorów (papier, tworzywo, metal, itd.). – Несмотря на стабильность производственного процесса возможны отклонения в оттенках цветов представленных образцов и радиаторов в различных партиях, а также расхождения с тем же цветом, нанесенным на другие материалы (керамика, бумага, металл).



Zehnder
World of Colours

Z-V1021-RAD-COC, subject to change without notice